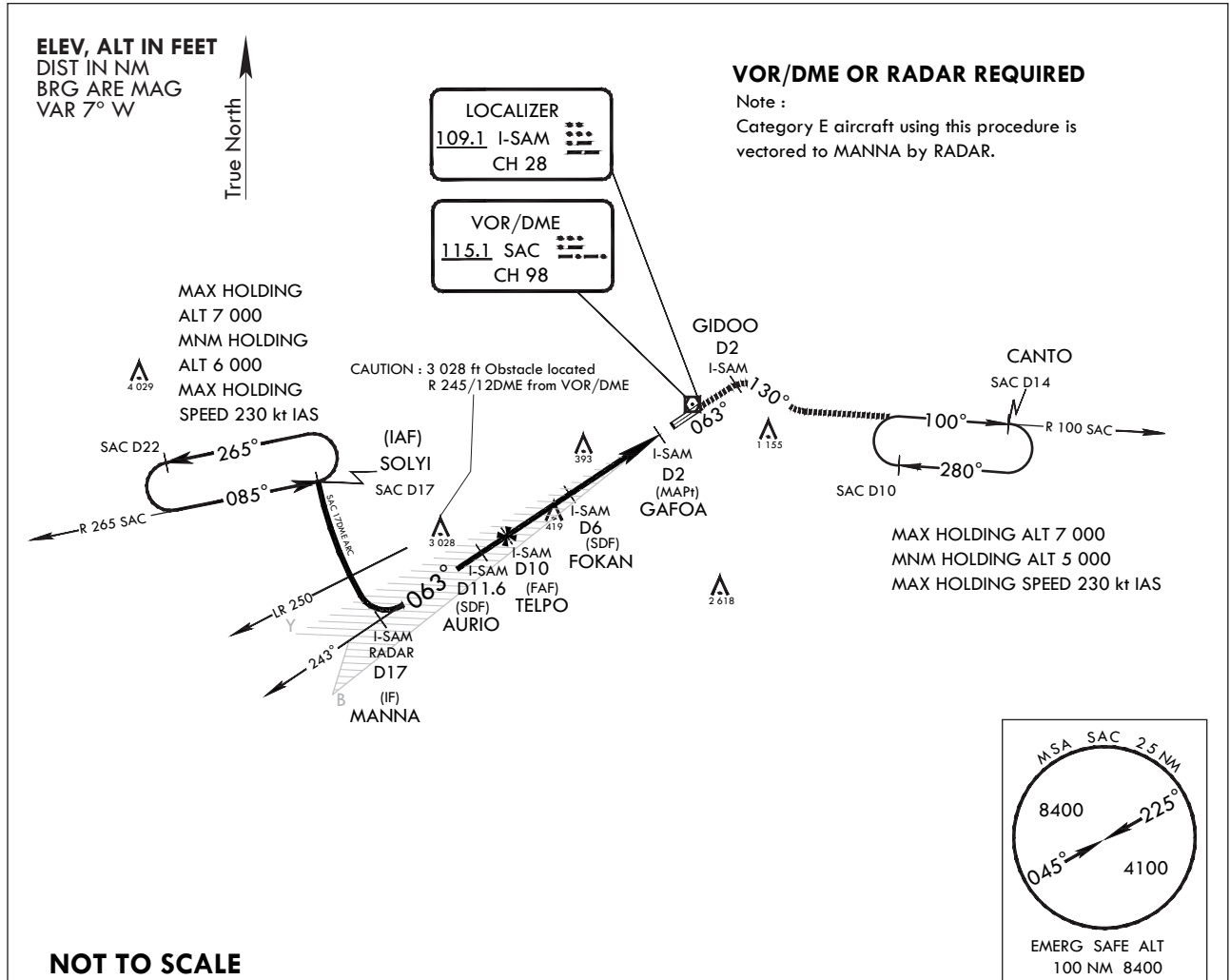


INSTRUMENT APPROACH CHART

AERODROME ELEV 25 ft
HEIGHTS RELATED TO HIGHEST ELEV TDZ 17 ft

SACHEON APP 135.4 344.7
SACHEON TWR 118.675 236.6
305.4

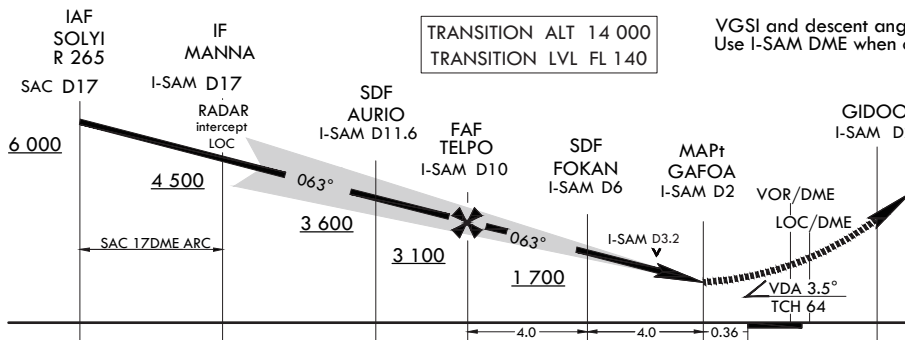
SACHEON/Sacheon (RKPS)
LOC/DME
RWY 06L



MISSED APPROACH : Climb to 5 000 via HDG 063° to GIDOO, then right turn HDG 130° to intercept R 100 SAC and track on R 100 SAC to CANTO and hold, continue climb-in-hold to 5 000, or as directed by ATC.



VGSI and descent angles not coincident (VGSI 3.7° TCH 60). Use I-SAM DME when on the localizer course.



CATEGORY	A	B	C	D	E
S-LOC 6L *	700/40	683(700-¾)	700-1½	683(700-1½)	
CIRCLING **	800-1 775(800-1)	900-1¼ 875(900-1¼)	1 000-3	975(1 000-3)	1 120-3 1 095(1 100-3)

* When ALS inop, increase CAT AB RVR to 55 and vis to 1 mile, CAT CDE vis to 2 miles.
** Circling is not authorized SE of RWY 06/24.

INTENTIONALLY

LEFT

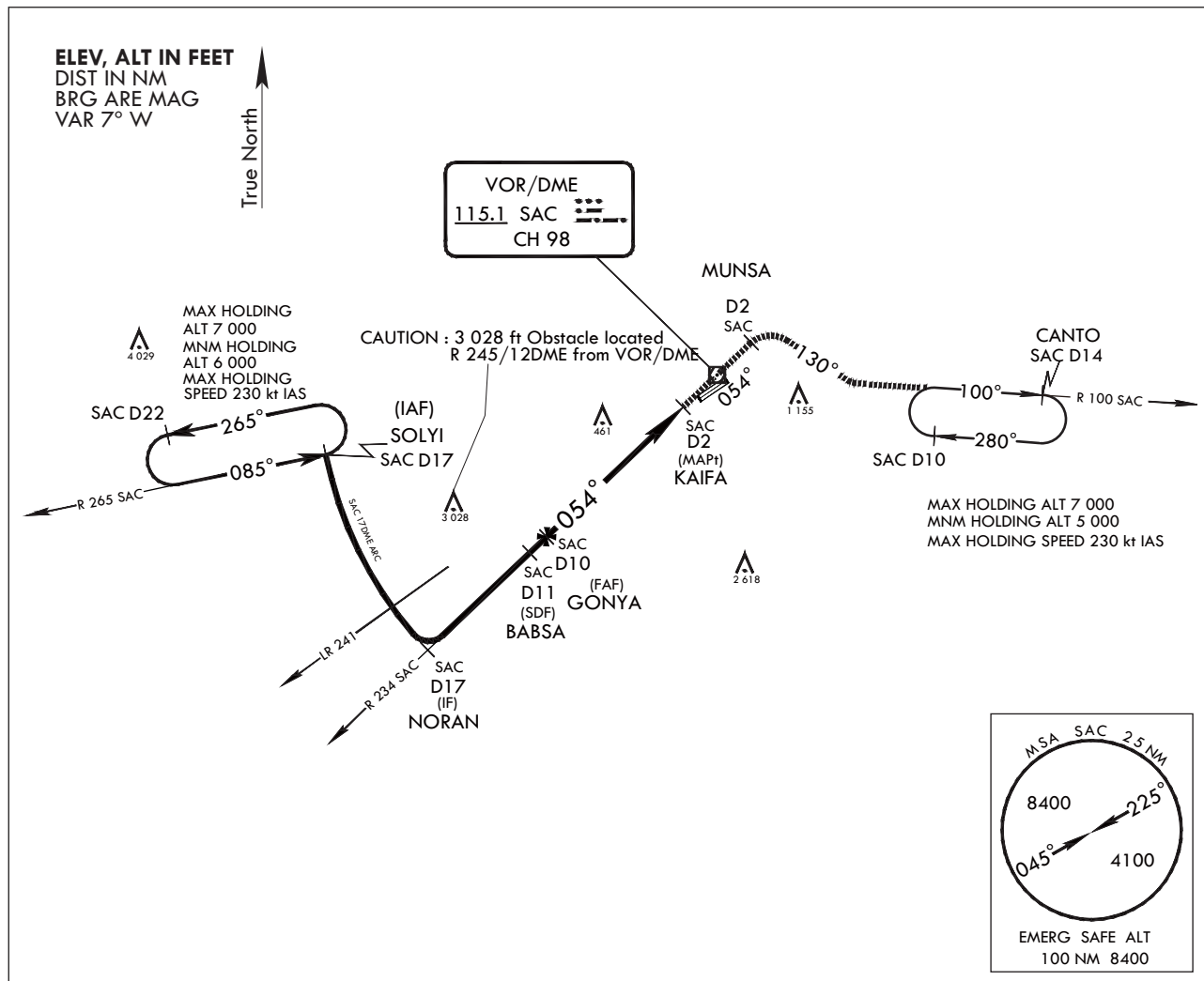
BLANK

**INSTRUMENT
APPROACH
CHART**

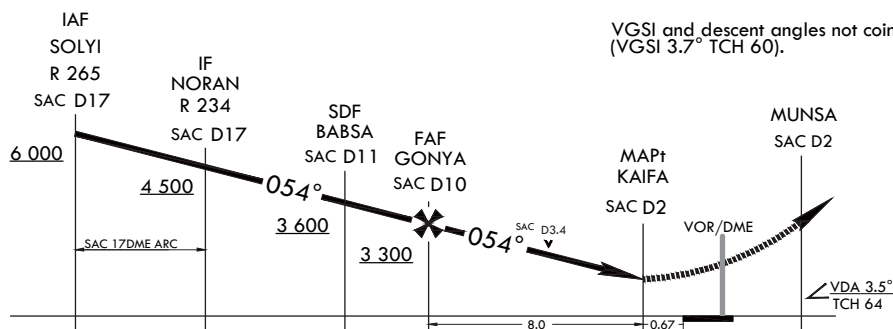
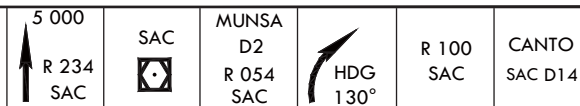
AERODROME ELEV 25 ft
HEIGHTS RELATED TO
HIGHEST ELEV TDZ 17 ft

SACHEON APP 135.4 344.7
SACHEON TWR 118.675 236.6
305.4

**SACHEON/Sacheon (RKPS)
VOR/DME
RWY 06L**



MISSED APPROACH : Climb to 5 000 via track on R 234 SAC to SAC over and track on R 054 SAC to MUNSA, HDG 130° to intercept R 100 SAC and track on R 100 SAC to CANTO and hold, continue climb-in-hold to 5 000.



CATEGORY	A	B	C	D
S-VOR 6L *	880/45	863(900-7/8)	880-2	863(900-2)
CIRCLING **	880-1 1/4 855(900-1 1/4)	900-1 1/4 875(900-1 1/4)	1 000-3	975(1 000-3)

* When ALS inop, increase CAT A RVR to 55 and vis to 1 mile, CAT B RVR to 60 and vis to 1 1/4 miles, CAT CD vis to 2 1/2 miles.
** Circling is not authorized SE of RWY 06/24.

INTENTIONALLY

LEFT

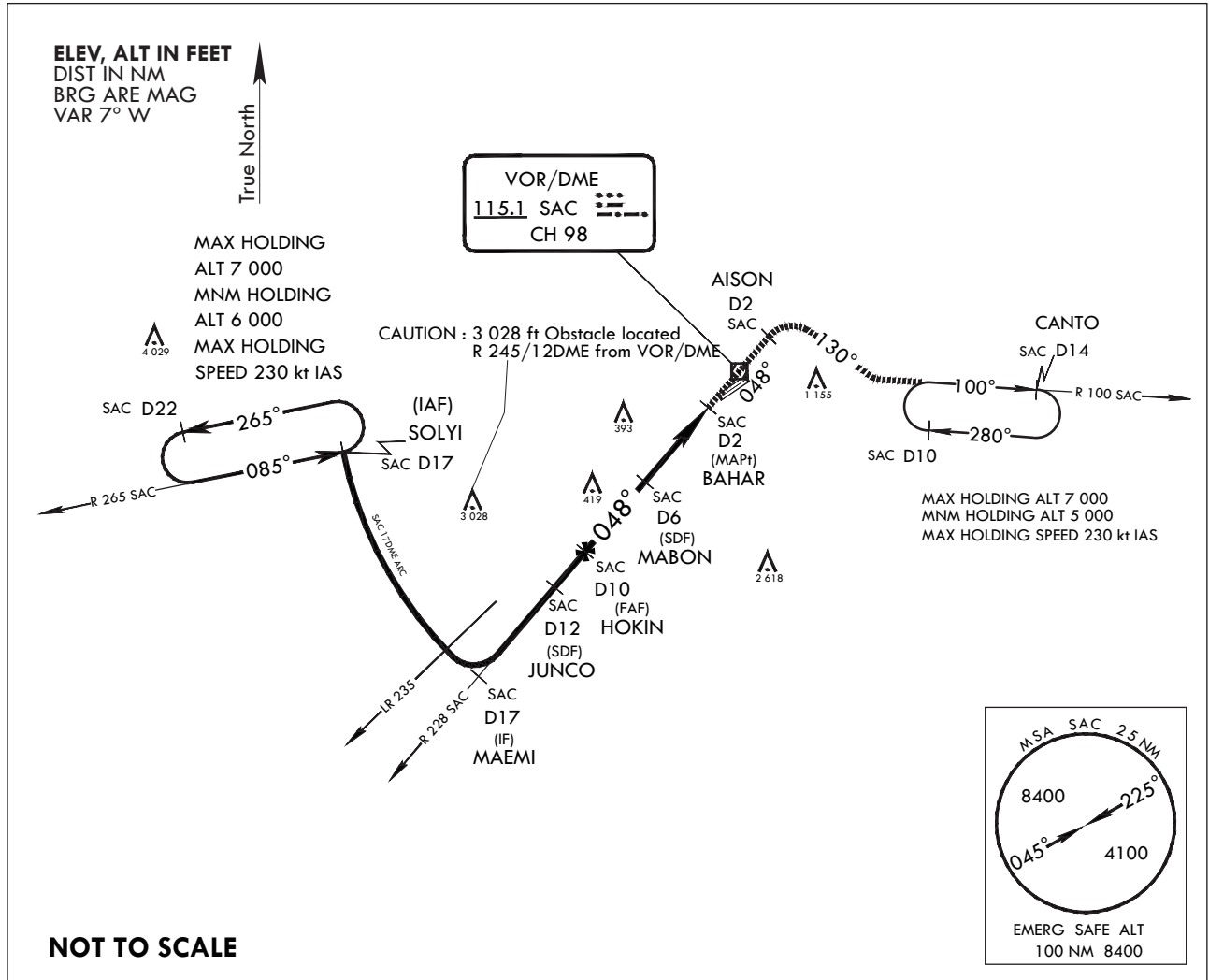
BLANK

**INSTRUMENT
APPROACH
CHART**

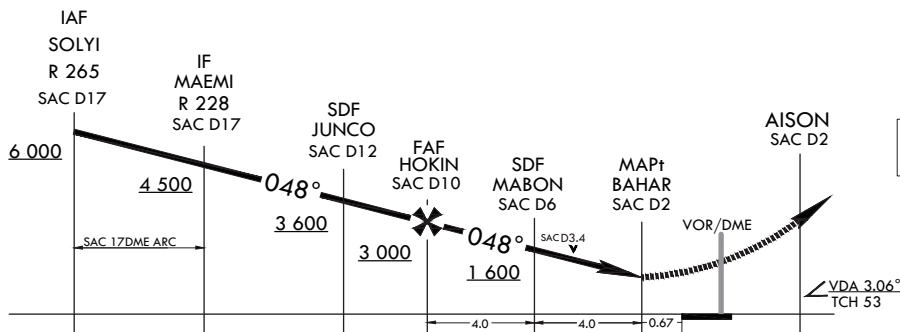
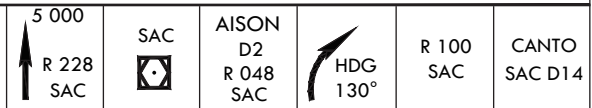
AERODROME ELEV 25 ft
HEIGHTS RELATED TO
HIGHEST ELEV TDZ 19 ft

SACHEON APP 135.4 344.7
SACHEON TWR 118.675 236.6
305.4

**SACHEON/Sacheon (RKPS)
VOR/DME
RWY 06R**



MISSED APPROACH : Climb to 5 000 via track on R 228 SAC to SAC over and track on R 048 SAC to AISON, then right turn HDG 130° to intercept R 100 SAC and track on R 100 SAC to CANTO and hold, continue climb-in-hold to 5 000.



TRANSITION ALT 14 000
TRANSITION LVL FL 140

CATEGORY	A	B	C	D
S-VOR 6R *	700/45	681(700-7/8)	700-1½	681(700-1½)
CIRCLING **	800-1 755(800-1)	900-1¼ 875(900-1¼)	1 000-3	975(1 000-3)

* When ALS inop, increase CAT AB RVR to 55 and vis to 1 mile, CAT CD vis to 2 miles.
** Circling is not authorized SE of RWY 06/24.

INTENTIONALLY

LEFT

BLANK

**INSTRUMENT
APPROACH
CHART**

AERODROME ELEV 25 ft
HEIGHTS RELATED TO
HIGHEST ELEV TDZ 24 ft

SACHEON APP 135.4 344.7
SACHEON TWR 118.675 236.6
305.4

**SACHEON/Sacheon (RKPS)
VOR/DME
RWY 24L**

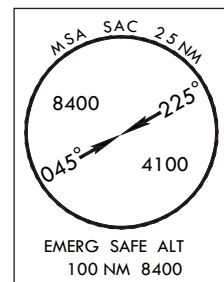
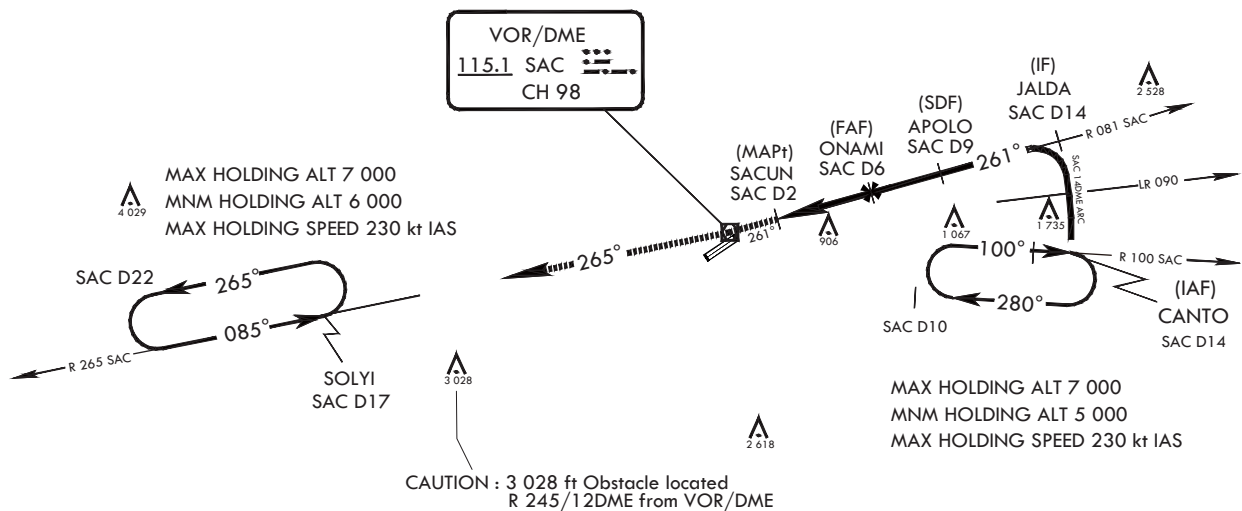
Note : Approach and circling-to-land under U.S.TERPS

ELEV, ALT IN FEET
DIST IN NM
BRG ARE MAG
VAR 7° W



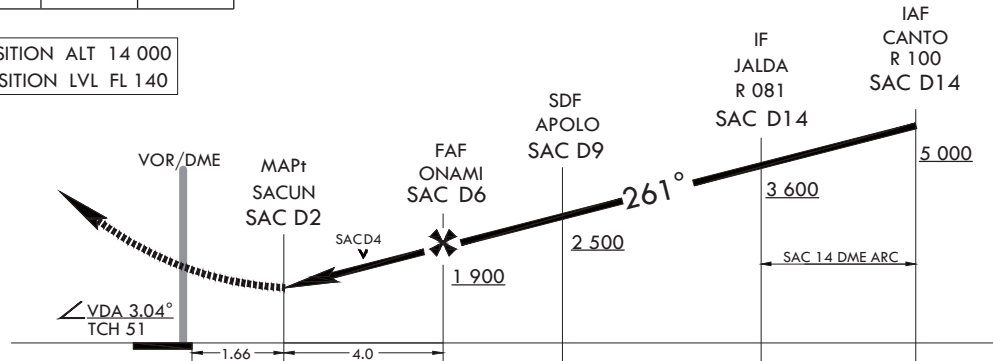
Missed approach obstacle minimum climb rate table

KNOTS	60	120	180	240	300	TO
V/V(fpm)	210	420	630	830	1 040	4 000



MISSED APPROACH : Climb to 6 000 via HDG 261° to SAC then track outbound R 265 SAC to SOLYI(R 265 SAC/17DME) and hold, continue climb-in-hold to 6 000.

TRANSITION ALT 14 000
TRANSITION LVL FL 140



CATEGORY	A	B	C	D
S-VOR 24L	1 220-2	1 196(1 200-2)	1 220-3	1 196(1 200-3)
CIRCLING*	1 220-2	1 195(1 200-2)	1 220-3	1 195(1 200-3)

* Circling is not authorized SE of RWY 24/06.

INTENTIONALLY

LEFT

BLANK

INSTRUMENT APPROACH CHART
AERODROME ELEV 25 ft
HEIGHTS RELATED TO HIGHEST ELEV TDZ 19 ft

SACHEON APP 135.4 344.7
SACHEON TWR 118.675 236.6
305.4

SACHEON/Sacheon (RKPS)
ILS
RWY 24R

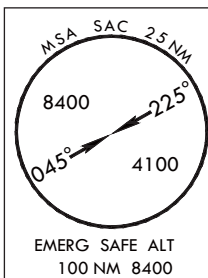
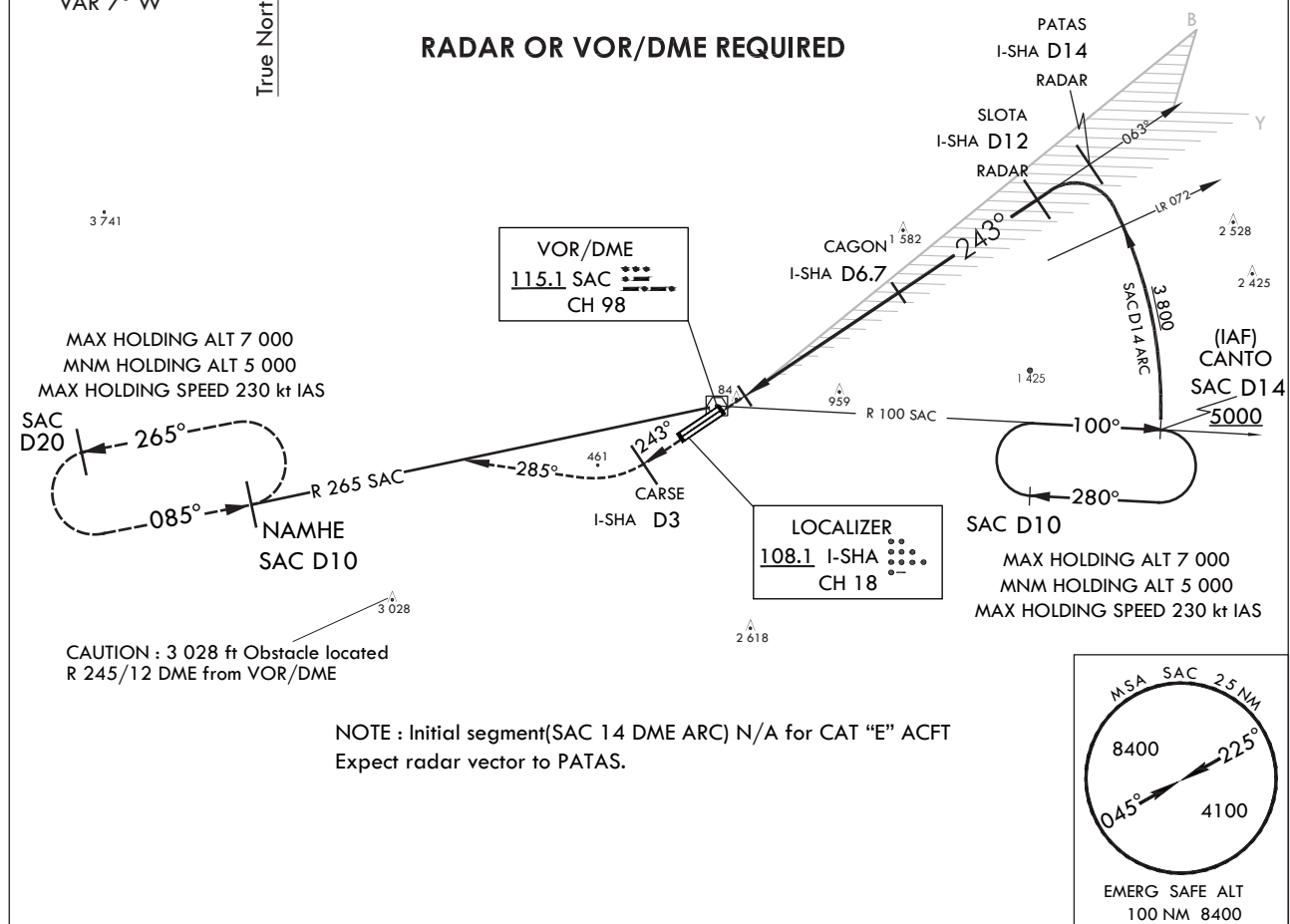
ELEV, ALT IN FEET
DIST IN NM
BRG ARE MAG
VAR 7° W



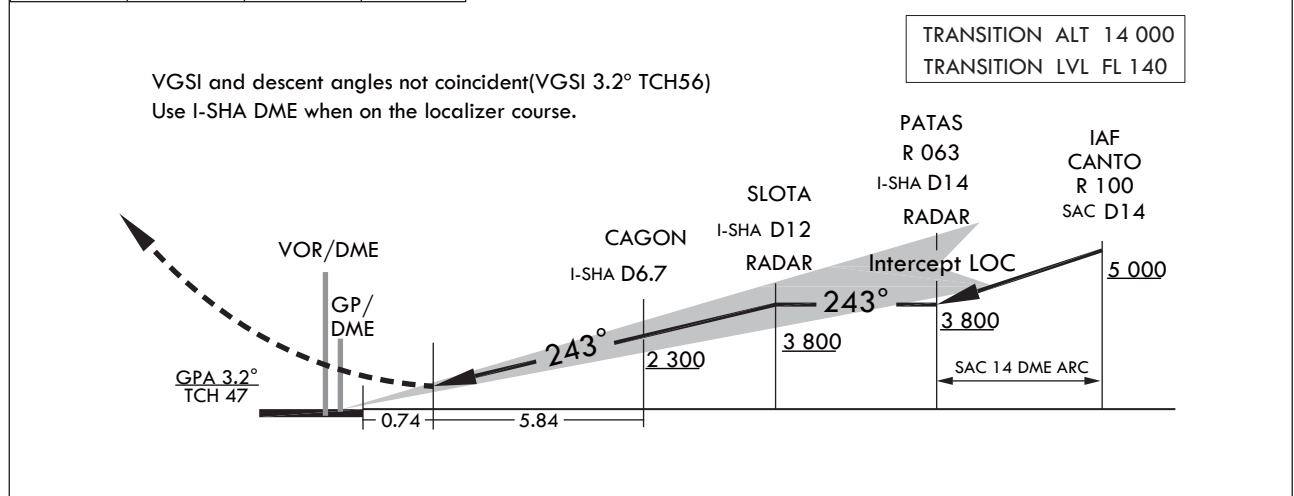
Missed approach obstacle minimum climb rate table

KNOTS	60	120	180	240	300	TO
V/V(fpm)	320	630	940	126	1 570	4 000

RADAR OR VOR/DME REQUIRED



MISSED APPROACH : Climb to 6 000 via HDG 243° to I-SHA 3DME then climbing right turn HDG 285°, then track outbound R 265 SAC to NAMHE and hold, continue climb-in-hold to 6 000, or as directed by ATC.



CATEGORY	A	B	C	D	E
S-ILS 24R		317/45	298(300-7/8)		

Change : Amended ILS plan view symbol.

INTENTIONALLY

LEFT

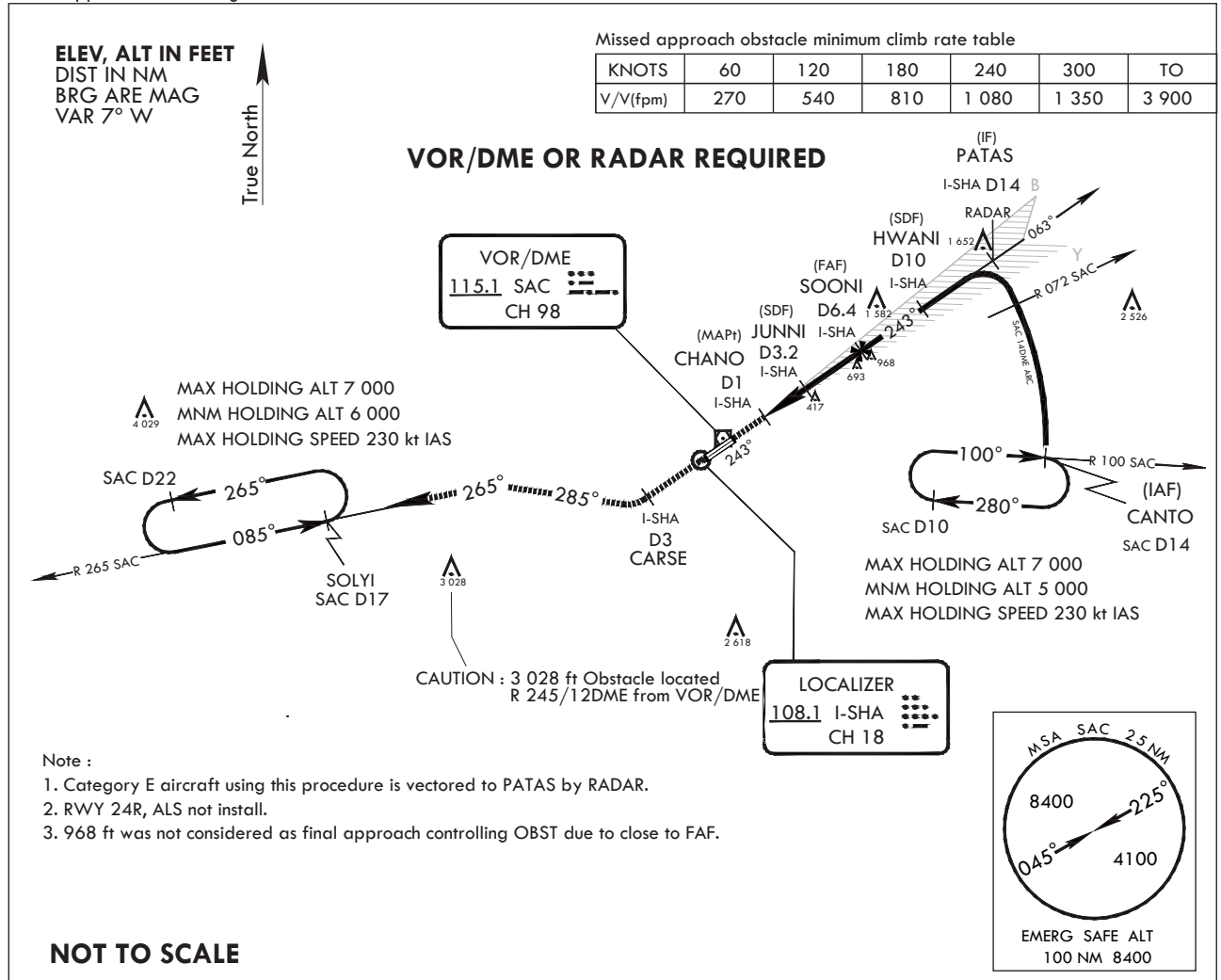
BLANK

**INSTRUMENT
APPROACH
CHART**

AERODROME ELEV 25 ft
HEIGHTS RELATED TO
HIGHEST ELEV TDZ 19 ft
Note : Approach and circling-to-land under U.S.TERPS

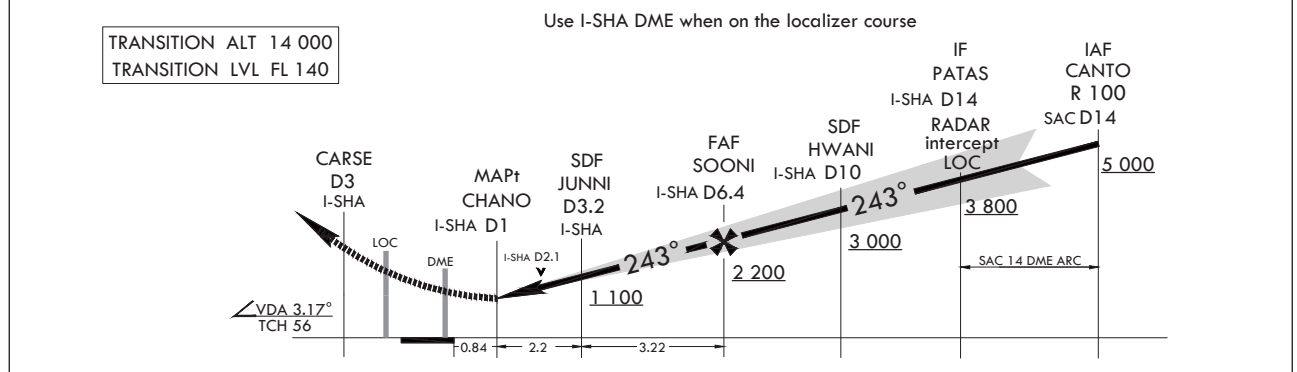
SACHEON APP 135.4 344.7
SACHEON TWR 118.675 236.6
305.4

**SACHEON/Sacheon (RKPS)
LOC/DME
RWY 24R**



6 000	CARSE I-SHA D3	HGD 243°	R 265 SAC	SOLYI SAC D17
		HGD 285°		

MISSED APPROACH : Climb to 6 000 via heading 243° to I-SHA 3DME and right turn HDG 285° and track outbound R 265 SAC to SOLYI(R 265 SAC/17DME) and hold, continue climb-in-hold to 6 000, or as directed ATC.



CATEGORY	A	B	C	D	E
S-LOC 24R	740/55	721(800-1)		740-2	721(800-2)
CIRCLING*	840-1 ¼ 815(900-1¼)	880-1 ¼ 855(900-1¼)	1 000-3 975(1 000-3)	1 020-3 995(1 000-3)	1 120-3 1 095(1 100-3)

* Circling is not authorized SE of RWY 24/06.

INTENTIONALLY

LEFT

BLANK

**INSTRUMENT
APPROACH
CHART**

AERODROME ELEV **25** ft
HEIGHTS RELATED TO
HIGHEST ELEV TDZ **19** ft

SACHEON APP 135.4 344.7
SACHEON TWR 118.675 236.6
305.4

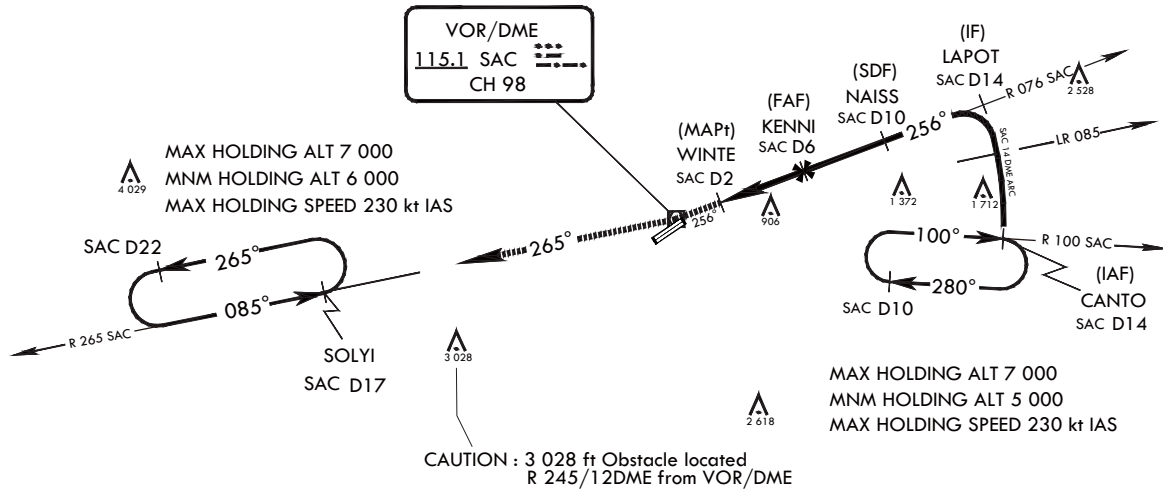
SACHEON/Sacheon (RKPS)
VOR/DME
RWY 24R

ELEV, ALT IN FEET
DIST IN NM
BRG ARE MAG
VAR 7° W

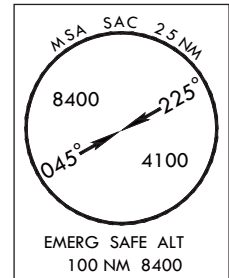


Missed approach obstacle minimum climb rate table

KNOTS	60	120	180	240	300	TO
V/V(fpm)	210	420	630	830	1 040	4 000



Note :
RWY 24R, ALS not install.

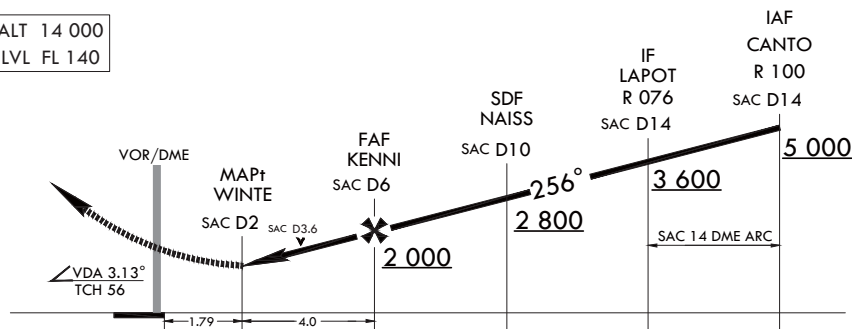


NOT TO SCALE

6 000	SAC	R 265 SAC	SOLYI SAC D17
HDG 256°			

MISSED APPROACH : Climb to 6 000 via HDG 256° to SAC then track outbound R 265 SAC to SOLYI(R 265 SAC/17DME) and hold, continue climb-in-hold to 6 000.

TRANSITION ALT 14 000
TRANSITION LVL FL 140



CATEGORY	A	B	C	D
S-VOR 24R	1 220-2 ¹ / ₈	1 201(1 200-2 ¹ / ₈)	1 220-3	1 201(1 200-3)
CIRCLING *	1 220-2 ¹ / ₈	1 195(1 200-2 ¹ / ₈)	1 220-3	1 195(1 200-3)

* Circling is not authorized SE of RWY 24/06.

INTENTIONALLY

LEFT

BLANK